

Deaf and Hard of Hearing Services

October 2008

Our mission...

is to enable students who are Deaf and Hard of Hearing at Eastern Kentucky University to achieve their educational goals, both personal and academic, to the fullest of their abilities by providing and coordinating accessible services which afford individuals equal opportunity to attain these goals.

In This Issue

- Deaf World
- Disability Awareness Month
- Interpreted Theatre
- Vagina Monologues Auditions
- ASL Monster Bash
- Emergency Text Messaging System
- Transcription Services



Have your notetakers complete the notetaker agreement and contract forms and return them to Case Annex 202-207.

Deaf World

Deaf and Hard of Hearing Services at Eastern Kentucky University has developed a new activity this year in conjunction with Disability Awareness Month. The concept of *Deaf World* is to raise awareness of individuals within the community who rely on American Sign Language as their primary mode of communication.



For those that remember Deaf University, this activity will deliver the same awareness and fun for all participants. *We need deaf, hard of hearing, and ITP students to volunteer, so please sign up to work this event.*

VOICE OFF and HANDS ON you will be entering the DEAF WORLD. Remember to smile, laugh and have FUN.

Deaf World will be held on Friday, October 31st from 10:30 a.m. to 2:30 p.m. in the Kennamer room of the Powell building.

For more information or to volunteer please contact Renee Montecinos at Renee.Montecinos@eku.edu or Shirley Rivard at Shirley.Rivard@eku.edu.

Other Disability Awareness Month Events

October is Disability Awareness Month at Eastern Kentucky University.

Please see the various events below.

October 15, Wednesday

Creating Accessible Blackboard Courses
10:10-11:00 a.m., Technology Studio, Case Annex 256

October 21, Tuesday

Vista Hacks for Boomers
10:10-11:00 a.m., Technology Studio, Case Annex 256

Make sure you fill your information on the forms as well.

The notetaker also needs to go to the Student Services Building 251 to complete necessary tax forms and background check. Be sure to have your EKU Student ID, Driver's License and Social Security card with you for the office to make copies.

All of the above must be completed by midterm, Friday October 17th.



You must apply for graduation one semester before you graduate. *If you are graduating next May or August of 2009 you must apply for graduation by October 31st.*

Deaf and Hard of Hearing Students: Your residence hall room should be equipped with a flashing fire alarm, if it is not, contact our office immediately.



October 22, Wednesday

Dreamweaver Accessibility Tools
10:10-11:00 a.m., Technology Studio, Case Annex 256

October 25, Saturday

Homecoming tailgating tent with food and display booths.

October 28, Tuesday

Afi-Tiombe Kambon
Brock Auditorium, 6:30-7:30 p.m.

October 29, Wednesday

Web Accessibility Enhancements Using CSS
10:10-11:00 a.m., Technology Studio, Case Annex 256

For more detailed information on the above events please go to <http://www.access.eku.edu/diverseabilitiesmonth.php>



ASL Monster Bash

The Social Committee under the American Sign Language & Interpreter Education Department (ASLIE) would like to make an announcement about the party we will be having on October 30th from 12:00 p.m. to 2:00 p.m. in Wallace 275. Our Halloween party will be called the "ASL Monster Bash". We are inviting all ASL students and the Deaf Community. The purpose of this event is to socialize in a Deaf-Friendly environment and meet new friends.

The ASLIE Department will provide the meat. Cold drinks can be purchased from the vending machines on the first and third floors of the Wallace Bldg; this will eliminate the need for cups and ice. Others can feel free to bring any type of side dish, chips or dessert, leaving the deaf community to be our guests!

Please share this to everyone and we hope to SEE you all on Oct 30th! Bring your family as well. Don't forget your costumes!

Contact Us

Mailing Address:

Coates 27A

521 Lancaster Avenue

Richmond, KY 40475

859-622-2937

shirley.rivard@eku.edu

DHHS Offices:

Case Annex 202 - 207

If you have any comments/submissions, wish to be added/deleted from our distribution list or need the newsletter provided in an alternative version please contact the newsletter at:

dhhsnewsletter@eku.edu

Interpreted Theatre



Berea College Theatre is performing *Life Is A Dream*. Sign language interpreters will be provided for the October 24th showing at 8pm. Please contact tara.stevens@eku.edu for more information.

Vagina Monologues Auditions

We are looking for numerous enthusiastic women to take part in this years production of The Vagina Monologues which will run in the month of February. The play, written by Eve Ensler, is based on over 300 interviews with women worldwide. This will be a student-driven production and all proceeds will be donated to the Bluegrass Rape Crisis Center.

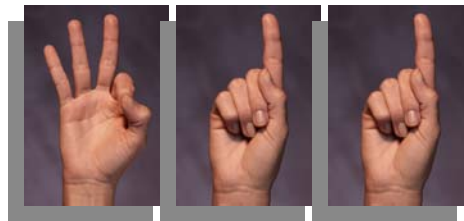
This year we are auditioning for parts in several languages, including American Sign Language *must be fluent*. You do not need to have any theatrical experience to audition just come with a smile on your face.

October 14, 2008 4p.m.-6p.m.

October 16, 2008 6p.m.-8p.m

Please feel free to contact elizabeth_desanto@eku.edu with any questions.

Emergency Text Messaging System



EKU is now offering an emergency text messaging system. In the event of an emergency on campus, the system will be used to transmit text messages to your mobile device. This text messaging service is voluntary; however, you are strongly encouraged to opt-in. In order to receive these text messages you must register your mobile number by following the steps outlined below.

1. From the EKU homepage, click on "EKU Direct" and then log in.
2. At the top of the EKU Direct Main menu page, click on "Opt-In for Emergency Text Messaging".
3. From there, you will be directed to enter your mobile number; select your service provider and either opt-in or out. Once done, click "Submit" and you are registered.

Transcription Services

We now have transcription services available for videos or other media that may not be captioned. A transcription is a typed document of any spoken or other auditory information contained on a video or other media source. For more information about this service, please contact Shirley Rivard, Interpreter Coordinator at 859-622-2937 or Shirley.rivard@eku.edu.

